

Thank you for purchasing AUTEL tool. Manufactured to a high standard, our tool will, if used according to these instructions and properly maintained, give you years of trouble-free performance.

Getting Started



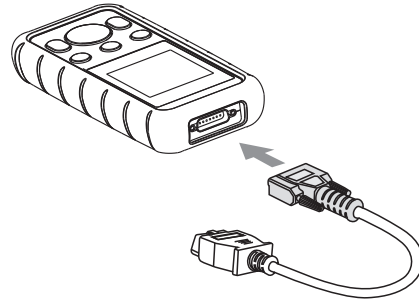
IMPORTANT: Before operating or maintaining this unit, please read these instructions carefully. Use this unit correctly and properly. Failure to do so may cause damage and/or personal injury and will void the product warranty.

1



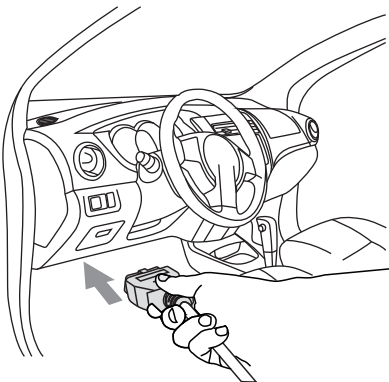
- Scan QR Code to visit our website at www.autel.com.
- Create an Autel ID and register the product with device's SN and password.

2



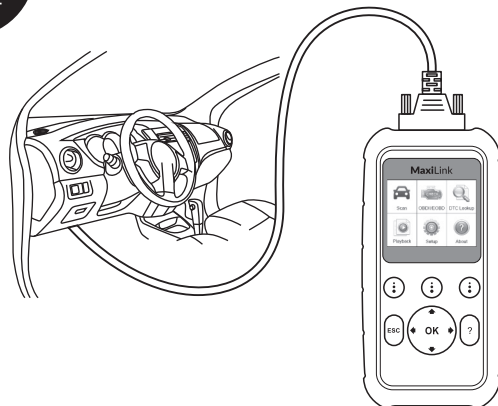
- Connect the OBD II cable's female adapter to the MaxiLink ML609P.
- Tighten the captive screws.

3



- Connect the OBD II cable's 16-pin male adapter to the vehicle's DLC which is generally located under the vehicle dash.
- The device will be automatically powered up.

4



- Your MaxiLink ML609P is now ready to work.

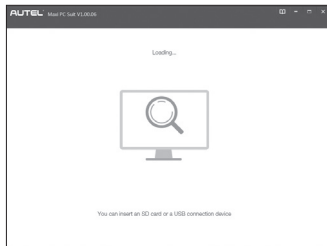


Please download the Maxi PC Suite from

www.autel.com > Support & Updates > Firmware & Downloads > Update Client, and install to your Windows-based computer.

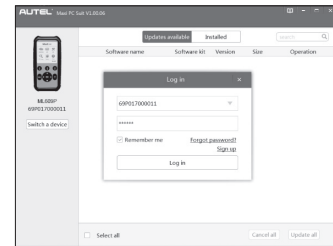
Software Update and Delete

1



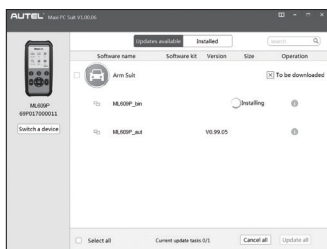
- Run the Maxi PC Suite. Wait for the **Log In** window to display.
- Connect the device with the computer using the included USB cable.
- Select **Update Mode** in the tool.

2



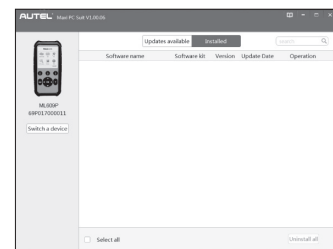
- Enter your Autel ID and password and wait for the **Update** window to display. If you forget your password, click the **[Forget Password?]** link to our website and retrieve your password. Or click **Sign up** to create an Autel ID to continue.
- Select tool and serial number, click **OK** to continue.

3



- In the **Update** window, select the appropriate files to install.

4



- Click on the **Installed** tag and the list of installed programs will display.
- Select the program(s) you want to delete.

Data Printing

- Connect the device to the computer with the USB cable supplied.
- Run **Autel Printer** on the computer which is installed after the installation of **Maxi PC Suite**.
- Select **Playback** function in the Main Screen of the tool. On the data menu screen, use the **UP/DOWN** scroll button to select the data you want to print. Wait for the review window to display, and then select **Print** function.
- The selected data will display on the textbox of the **Autel Printer**. By selecting the function keys on the right, you could execute the following operations:
 - Print** – print all data in the textbox. (A printer should be connected to the computer.)
 - Edit** – display an editable NOTEPAD window with recorded data.
 - Copy** – copy data in the textbox to the clipboard.
 - Clear** – delete data in the textbox.
 - Exit** – quit the operation.

For service and support, please contact us.

<http://pro.autel.com> / www.autel.com / support@autel.com
0086-755-86147779 (China HQ) / 1-855-288-3587/1-855-AUTELUS (North America)
0049 (0) 61032000522 (Europe) / (+507) 308-7566 (South America) / 03 9480 2978 / +61 476293327 (Australia)

© Autel Intelligent Technology Corp., Ltd. All Rights Reserved.